

Valle Lindo School District

Dean L. Shively Middle School

2001-2002 Annual School Report Card



1431 North Central Avenue - South El Monte, CA 91733
(626) 580-0610 - Fax (626) 575-1534
Fourth Grade through Eighth Grade
Albert E. Crespo, Principal

ValleLindo@earthlink.net

Introduction: Voter approval of Proposition 98 in November of 1998 requires that each school publish an annual School Accountability Report Card (SARC) to explain school programs, their costs, and effectiveness. This annual report is based on the best data available at the time of publication and provides information about our school in the following areas:

- Principal's Message
- Mission Statement
- Community & School Profile
- Community Involvement
- Discipline & Climate for Learning
- School Attendance
- Class Size
- Instructional Minutes
- Minimum Days
- Textbooks & Instructional Materials
- Teacher Assignment
- Academic Performance Index (API)
- Student Achievement and Testing
- School Facilities and Safety
- Support Services
- Teacher Evaluation & Development
- Substitute Teachers
- Training & Curriculum Improvement
- Quality of Instruction & Leadership
- Expenditures & Services Funded
- Salary & Budget Comparison
- Contact Information

Principal's Message

The purpose of the School Accountability Report Card is to provide parents with information about the school's instructional programs, academic achievement, materials and facilities, and the staff. Understanding the school's educational program, student achievement, and curriculum development can assist both school and community in ongoing program improvement.

The staff at Dean L. Shively Middle School believes each child is unique and deserving of a rich educational environment. Each student has access to rigorous curriculum in language arts, mathematics, science, and social science.

Dean L. Shively Middle School prides itself in involving the parents and community members in every aspect of our school. We believe that parents, community members, and staff must work together for the education of all students. We are very proud of our fine tradition at Dean L. Shively Middle School.

Mission Statement

It is the mission of the Valle Lindo School District that all students realize their maximum potential, empowering them to become challenged intellectually, socially responsible, and culturally sensitive.

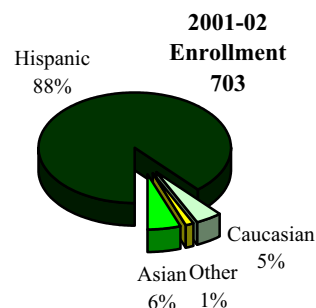
Community & School Profile

The Valle Lindo School District is located on the southern edge of the San Gabriel Valley in the city of South El Monte, approximately twenty miles east of Los Angeles. The District operates two

schools, one K-3 and one 4-8 with a combined enrollment of 1,287 students. (CBEDS)

Valle Lindo was one of the first school Districts in the San Gabriel Valley established in 1863. Its rich cultural heritage and proud traditions embrace the community's desire to ensure a strong educational foundation for its children.

Dean L. Shively Middle School operates on a traditional calendar school year for fourth through eighth grade students. At the beginning of the 2001-02 school year, 703 students were enrolled in the middle school. (CBEDS)



Community Involvement

Support of the education program at Dean L. Shively Middle School is provided by parent and community volunteers, and District personnel.

- The PTA is a parent-teacher organization that sponsors parent education, fundraising, education and cultural assemblies, and promotes school spirit in the community.
- The School Improvement Council has representatives for parents, faculty, and staff to address curriculum and instructional issues.
- The school District shares its property with the community for facility, playing field, and park usage.

Discipline & Climate for Learning

Maintaining a positive learning environment is very important to staff, students, and parents. At the beginning of the school year, a copy of the school discipline plan is sent home to parents for information. Students are informed of school rules through grade appropriate assemblies.

	Suspensions and Expulsions					
	1998-99		1999-00		2000-01	
	Shively	VLSD	Shively	VLSD	Shively	VLSD
Suspensions (#)	89	89	59	59	82	83
Suspensions (%)	13.11%	7.21%	8.85%	4.83%	11.65%	6.45%
Expulsions (#)	0	0	0	0	0	0
Expulsions (%)	0.00%	0.00%	0.00%	0.00%	0.00%	0.00%

Extracurricular Activities

Each classroom teacher develops classroom rules with consequences and rewards. Individual recognition for students include class incentives and teacher developed awards given weekly and monthly. Recognition programs provide encouragement and reinforces academic performance and behavior. Dean L. Shively Middle School provides the following programs:

- Pats on the Back
- Student of the Month
- Student of the Week
- Academic Awards
- Honor Roll
- Perfect Attendance (each trimester)
- Sports Awards
- Citizenship Awards

School climate is enhanced by student council and programs sponsored by administration. Students are encouraged to participate in Dean L. Shively's extracurricular activities, school clubs, and athletics such as:

- The Student Store
- Band (4th-8th grades)
- Junior Olympics
- Pep Squad
- Student Council
- Drill Team
- Jump Rope for Heart
- GATE - 4th-8th grades
- Volleyball - 7th and 8th grade boys and girls
- Football - 7th and 8th grade boys
- Basketball - 7th and 8th grade boys and girls
- Soccer - 6th, 7th, and 8th grade boys and girls
- After School Computer Labs/Homework Clubs

Dean L. Shively Middle School has not expelled any of its students during the past three years; expulsions occur only when required by law or when all other alternatives are exhausted.

Homework

Dean L. Shively Middle School feels homework is a fundamental part of the learning process that helps to develop basic academic and study skills as well as promote student responsibility and self-discipline. Homework in the Valle Lindo School District is governed by Board Policy 6154. Regulations designate homework to be assigned on an average of four nights a week.

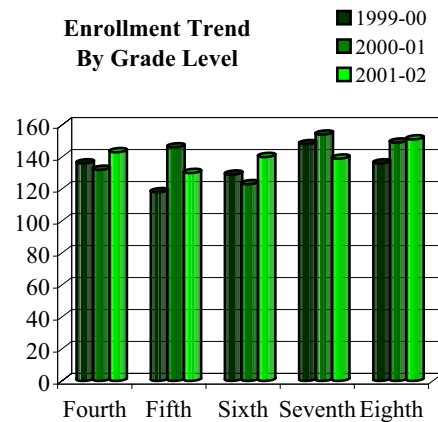
A daily after-school homework club, including reading and math remediation and computer classes, is provided for students.

Recommended Homework Expectation	
Grade	Average Minutes Per Day
Fourth - Sixth	30-60
Seventh - Eighth	60-90

School Attendance

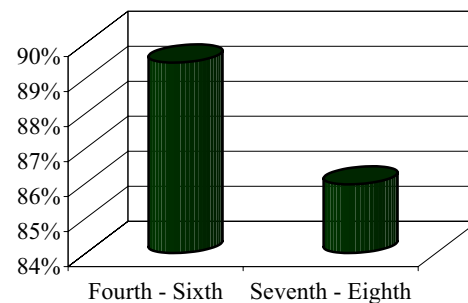
Student enrollment over the past three years at Dean L. Shively Middle School has increased by 5.4%. Schoolwide enrollment at the beginning of the 2001-02 school year was 703 students. Dean L. Shively Middle School is a school of choice and accepts students from neighboring districts provided space is available and class sizes do not exceed the school's maximum allowable class size. During the 2000-01 school year, 12% of the District's enrollment was comprised of interdistrict transfers from other districts throughout Los Angeles County.

Enrollment Trend By Grade Level



At Dean L. Shively Middle School, regular attendance and punctuality are critical elements in a child's education. The school is required to maintain an accurate accounting of student absences and tardies on a daily basis.

2000-2001 Actual Attendance Rates By Grade Level



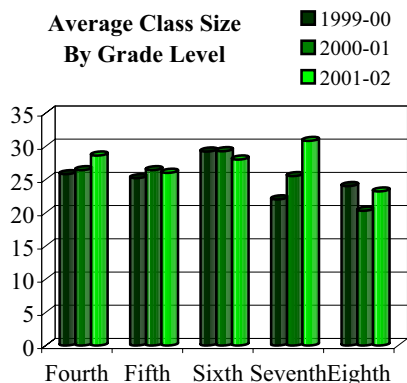
Punctuality is also an important part of a child's life-long learning habits. Whenever a student is tardy to class, he/she disrupts the instructional process for the entire class. All students are expected to be in their classrooms when the final bell rings. Any student not in the classroom at the designated time will be considered tardy for that day and will be in violation of school rules and appropriate consequences will be applied to include make-up of lost time.

School attendance patterns are important identifiers of students who are at risk of dropping out of school in the junior high or high school years. Dean L. Shively Middle School carefully monitors student attendance to identify those students exhibiting excessive absences. For the 2000-01 school year, the actual attendance rate school wide at Dean L. Shively Middle School was 85.88%. The chart below shows the actual attendance rate by grade level for the 2000-01 school year.

A variety of procedures are in place to improve student attendance. A note from home is required following all absences. If a student returns without a note, a call is placed to the home. If no contact can be made, a letter is sent or a home visit may be made. Chronic absences are referred to the SARB (School Attendance Review Board). When a child has twenty or more absences, which may include tardies, the parent is notified by SARB through correspondence, a phone call, or conference.

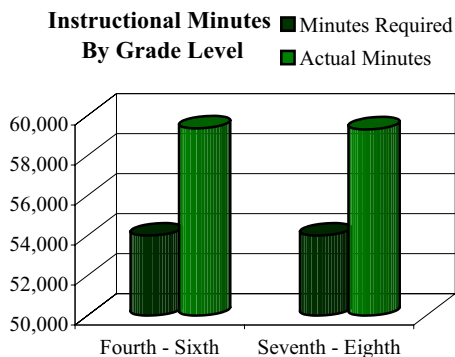
Class Size

Dean L. Shively Middle School maintained a schoolwide average class size of 28 students and a pupil/teacher ratio of 25:1 at the beginning of the 2001-02 school year. The ratio of students per teacher varies by grade level and subject area taught.



Instructional Minutes

The state requires by law that students receive the appropriate amount of instructional minutes for their grade level. Dean L. Shively Middle School provides for greater classroom instruction with instructional minutes exceeding state requirements by 30 minutes each day.



Minimum Days

For the 2000-2001 school year, Dean L. Shively Middle School offered 180 days of instruction comprised of 169 regular days and 11 minimum days. All instructional days either met or exceeded the daily instructional minute requirements specified in the California Education Code.

Textbooks & Instructional Materials

Dean L. Shively Middle School sets a high priority upon ensuring that sufficient and current textbooks and materials are available to support the school's instructional program as well as provide students with their own textbooks. All textbooks and instructional materials used within the school are aligned with the California State Content Standards and Frameworks as well as the school's curriculum council standards.

The staff is committed to providing quality education to all students. Site and District administration work collaboratively with staff in developing curriculum and methodologies, which best meet the needs of a diversified population.

The staff clearly recognizes the reality that a changing student population requires well thought out curriculum revisions and school program adaptation.

The District ensures that all teachers have the state-adopted textbooks and supplemental materials necessary to provide quality education program for Dean L. Shively Middle School students.

In view of the positive effects technological growth has on the educational climate, Valle Lindo School District has four state-of-the-art computer labs all of which are connected to the internet. The following are additional technology resources:

- New IMAC computers that are connected to the Internet
- Color laser printer
- Scanners
- VCRs
- TVs
- Digital Cameras
- Digital Video Cameras

Computer Resources			
	1999-00	2000-01	2001-02
Computers	120	246	220
Students per computer	5.6	2.75	3.20
Classrooms connected to Internet	0	0	3

Teacher Assignment

Valle Lindo School District recruits and employs the most qualified credentialed teachers. At the beginning of the 2001-02 school year, Dean L. Shively Middle School had 14 fully credentialed teachers who met all credential requirements in accordance with State of California guidelines.

Teacher Credential Status			
	1999-00	2000-01	2001-02
Fully Credentialed	16	13	14
Emergency Credentials	11	15	8
Without Credentials	0	0	0
Pre-Interns	0	0	6
University Interns	0	0	0
District Interns	0	0	0
Working Outside Subject	0	0	0

Some teachers hold multiple credentials; in many instances, teachers supplement their regular credential with a special education credential.

Dean L. Shively Middle School supports efforts made by teachers and other certificated school staff in attaining additional education and training through local colleges and universities for their personal growth as well as for the benefit of the school. All teachers possess Bachelors Degrees and many hold advanced degrees.

Academic Performance Index

The Academic Performance Index (API) is one of three components of the Public Schools Accountability Act (PSAA) passed in 1999. The API measures school performance, sets academic growth targets, and monitors growth over time based on SAT-9 results. If a school meets its growth targets, including subgroup targets, it may be eligible to receive monetary and non-monetary awards.

This percent is calculated by dividing the number of students tested by enrollment in grades tested as indicated in the October, 1999 CBEDS School Information Form.

The API scale is 200-1000. Only scores for students in the district the prior school year are included in the calculation. Rankings are in deciles with 10 being the highest and 1 being the lowest. Each decile contains 10% of all schools. The growth target is 5% of the difference between the 2000 API and the interim Statewide Performance Target of 800. This is the sum of the 2000 API plus 2000-2001 Growth Target.

Student Achievement & Testing

Various measures of student achievement are used as an ongoing part of the quality instructional program at Dean L. Shively Middle School. These measures are much more authentic in terms of students' actual progress as well as a measurement of the effectiveness of the instructional program.

Classroom Assessments are developed by the teachers to assess student progress on classroom instruction and are administered to all grade levels throughout the year.

Standardized State Testing

Dean L. Shively Middle School participates in California's mandatory Standardized Testing and Reporting Program (STAR) which utilizes the Stanford Achievement Test Series (SAT-9), California Standards Assessments, and the Spanish Assessment of Basic Education (SABE) and the California English Language Development Test (CELDT). The SAT-9 measures achievement based on student comparison; the California Standards Tests aid in determining the level of individual student comprehension and knowledge of skills required by the California Content Standards for each grade or course.

API School Results					
Base	Base			Growth	
	1999	2000	Growth	1999	2000
Percent Tested	97	100	Percent Tested	100	99
API Score	545	602	API Growth Score	602	580
Growth Target	13	10	Actual Growth	57	-22
Statewide Rank	3	4	Eligible for Awards	Yes	No
Similar Schools Rank	9	10	Eligible for II/USP	No	No

API Subgroup Results					
Base	Base			Growth	
	1999	2000	Growth	1999	2000
Hispanic or Latino					
Base API Score	532	590	API Growth Score	590	568
Growth Target	10	8	Actual Growth	58	-22
Socioeconomically Disadvantaged					
Base API Score	550	583	API Growth Score	583	570
Growth Target	10	8	Actual Growth	33	-13

SAT-9 Results 1999, 2000, 2001 % At or Above National Average															
Grade Year Ending	Reading														
	4			5			6			7			8		
	99	00	01	99	00	01	99	00	01	99	00	01	99	00	01
Shively	32	34	32	29	21	29	30	32	28	24	37	41	36	38	43
Los Angeles	32	35	38	33	35	37	34	36	38	35	37	39	38	40	41
California	41	45	47	42	44	45	44	46	47	44	46	48	47	49	50
Math															
Shively	40	37	41	39	31	36	33	45	45	34	42	46	22	38	34
Los Angeles	37	43	47	38	42	47	41	45	48	36	39	41	37	38	40
California	44	51	54	45	50	55	50	55	58	45	48	50	45	48	49
Language															
Shively	36	45	47	44	40	47	34	56	38	42	53	49	34	57	50
Los Angeles	39	44	48	40	43	47	41	44	47	43	46	48	41	42	44
California	47	51	54	47	50	53	49	52	54	51	54	56	49	51	52
Spelling															
Shively	35	47	38	43	34	46	31	43	35	39	48	49	23	36	32
Los Angeles	32	37	41	35	39	43	33	37	39	37	40	41	29	31	32
California	38	43	46	42	45	49	41	44	46	44	47	49	35	37	38

SAT-9 Disaggregated Results 2001 % At or Above National Average										
Gender	Reading					Math				
	4	5	6	7	8	4	5	6	7	8
Male	28	21	35	40	32	37	35	50	42	25
Female	38	36	20	41	51	47	37	39	49	42
Ethnicity	<i>Data currently unavailable.</i>									
Language Fluency										
Limited English Proficient	14	9	18	18	18	30	13	33	30	18
Non Limited English Proficient	39	38	33	49	50	46	47	51	51	39
Special Education Services										
Receiving Special Ed. Services	7	7	8	*	0	15	14	8	0	5
Not Receiving Special Ed. Services	35	31	32	44	52	44	38	50	49	40
Migrant	<i>Data currently unavailable.</i>									
Socioeconomic Status										
Economically Disadvantaged	29	28	24	41	40	44	36	43	46	35
Non Economically Disadvantaged	38	30	39	40	50	35	35	48	46	35

California Standards Test Results 2001

% of Students Scoring at:	English/Language Arts									
	4		5		6		7		8	
	A	P	A	P	A	P	A	P	A	P
Dean L. Shively	4	16	1	19	2	15	7	17	2	23
Los Angeles	8	18	5	17	6	18	7	18	7	18
California	11	22	8	21	8	23	9	23	9	23

California Standards Disaggregated Test Results 2001

% of Students Scoring at:	English/Language Arts									
	4		5		6		7		8	
	A	P	A	P	A	P	A	P	A	P
Gender	<i>Data currently unavailable.</i>									
Male	4	8	2	17	3	21	4	14	0	20
Female	4	28	1	20	0	7	9	20	3	26
Ethnicity	<i>Data currently unavailable.</i>									
Language Fluency	<i>Data currently unavailable.</i>									
Limited English Proficient	0	8	0	7	0	5	0	5	0	7
Non Limited English Proficient	5	20	2	25	3	20	9	22	3	28
Socioeconomic Status	<i>Data currently unavailable.</i>									
Economically Disadvantaged	1	18	2	19	0	15	7	14	1	25
Non Economically Disadvantaged	11	14	0	19	6	15	6	23	3	22
Migrant	<i>Data currently unavailable.</i>									

A = Advanced P = Proficient

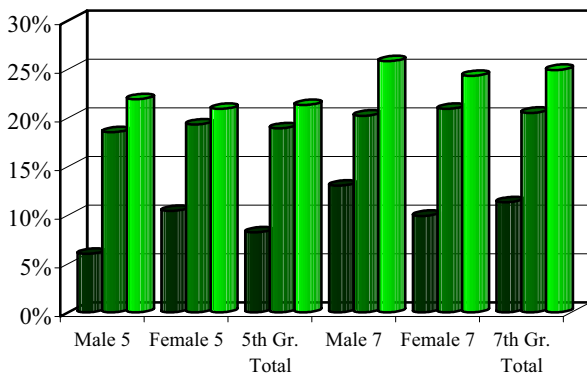
Physical Fitness

In the spring of each year, Dean L. Shively Middle School is required by the state to administer a physical fitness test to all students in fifth and seventh grade. The physical fitness test is a standardized evaluation that tracks the development of high-quality fitness programs and assists students in establishing physical activity as part of their daily lives. Results of student performance are compared to other students statewide who took the test.

The physical fitness test measures each student's ability to perform fitness tasks in six major areas; students are provided several options to perform tasks in each area. Students that either meet or exceed the standards in all six fitness areas are considered to be physically fit or in the 'healthy fitness zone' (HFZ).

Students In Healthy Fitness Zone

■ Dean L. Shively
■ Los Angeles
■ California



School Facilities & Safety

Dean L. Shively Middle School provides a safe, clean environment for students, staff, and volunteers. School facilities include the cafeteria and 30 classrooms, which are all up-to-date and provide ade-

quate space for students and staff. In the evenings and during the day, a cleaning crew ensures classrooms, restrooms, and campus grounds are kept clean and safe. A scheduled maintenance program is administered by the Valle Lindo School District to ensure that all classrooms and facilities are maintained to a degree of adequacy that provides for good learning.

Major improvements continue to take place at Dean L. Shively Middle School site. New air conditioning has been provided to all classrooms as well as new flooring and carpeting. Within the past few years, the entire school's interior and exterior has been painted. Upgrading the facilities is an ongoing process. During the 2000-01 school year Dean L. Shively Middle School added security camera's with the safety funding.

Safety of students and staff is a primary concern of Dean L. Shively Middle School. The school is always in compliance with all laws, rules, and regulations pertaining to hazardous materials and state earthquake standards.

The school's disaster preparedness plan includes steps for ensuring student and staff safety during a disaster. Today's educational environment increases the burden on school districts to prepare for emergencies previously thought to be outside the arena of public education. Valle Lindo School District has emergency Action Plans for various events, including but not limited to:

- Fallen Aircraft
- Fire
- Severe Weather
- Earthquake
- Bomb Threats
- Hostile Acts
- Chemical Accidents
- Disaster Service Workers
- Explosion or Threat of Explosions

These plans can be found in the Valle Lindo School District Emergency Preparedness Handbook.

Dean L. Shively Middle School's Safe School Plan ensures the protection of students and staff, the school and school property, and the establishment of a climate that is conducive to learning. The Safe School Plan is reviewed annually by the superintendent. Components of the Safe School Plan include strategies and programs that will provide and maintain a high level of school safety, assess current school crime occurring on campus and at school functions, and address procedures related to the compliance of existing laws as they affect school safety.

Support Services

It is the goal of Dean L. Shively Middle School to assist students in their social and personal development as well as academics. The District provides special attention to students who experience achievement problems, difficulty coping with personal and family problems, trouble with decision making, or handling peer pressure.

The school provides qualified personnel to provide support services, on a part-time and/or full-time basis. Psychologists are devoted to helping students deal with problems and assisting them to reach positive goals.

Community Resources

The Parent Institute provides intensive parent training sessions. The school is beneficiary to many wonderful parent volunteers who are acknowledged with an annual District barbecue sponsored by the School Board.

Teacher Evaluation & Professional Development

The District encourages and provides teachers with grade level and subject area training and educational opportunities for professional growth. New Temple Middle School teachers attended locally held conferences and several in-services throughout the school year for self-improvement.

Administrators evaluate teachers based on State Education Code requirements, provisions of the certificated contract agreement, and District policy.

Evaluation Criteria are:

- Engaging and Supporting All Students In Learning
- Understanding and Organizing Subject Matter for Student Learning
- Assessing Student Learning
- Creating and maintaining Effective Environments for Student Learning
- Planning Instruction and Designing Learning Experiences for All Students
- Developing as a Professional Educator

Teachers hired under Professional Cleared Credentials are required to develop and maintain a Professional Growth Plan.

Substitute Teachers

Dean L. Shively Middle School maintains a list of qualified substitute teachers. There is a growing need for substitute teachers in the entire State of California. During the 2000-01 school year, approximately 40% of the substitute teachers in the District pool held full teacher credentials and 60% held emergency waivers. The District continues to recruit qualified substitute teachers through the Internet, Job Track, flyers distributed to neighboring districts, colleges, universities, and newspaper ads.

Training & Curriculum Improvement

All training and curriculum development at Dean L. Shively Middle School revolves around the California State Content Standards and Frameworks. Teachers align classroom curriculum to ensure that all students either meet or exceed state proficiency levels.

The writing and implementation of Dean L. Shively Middle School's curriculum is an ongoing process. The school's curriculum guides are updated regularly to align with the state standards, district goals, and the statewide assessment program.

District curriculum committees for each major instructional area regularly update curriculum guides to align with state standards. All teachers review instructional materials for adoption and recommend appropriate in-service and staff development of teachers.

The District offers three staff development days annually where teachers are offered a broad based variety of professional growth opportunities in curriculum, teaching strategies, and methodologies.

In addition, staff members are encouraged to attend workshops and conferences. During the 2000-01 school year, training topics included:

- Classroom Management
- Strategies to Achieve
- Success In School
- Discipline with Dignity
- Guided Reading
- Teaching All Children to Read
- Composition and Literature
- 2nd Language Acquisition
- Singing and Reading Connection

The District is participating in the Beginning Teacher Support and Assessment (BTSA) with Los Angeles County Office of Education.

The school continues efforts in obtaining additional funds through grants and scholarships provided by various public and private resources for training and curriculum improvement.

Quality of Instruction & Leadership

In addition to regular classroom assignments, many teachers participate on school and district level committees. Teachers serve as leaders in professional organizations, attend conferences and workshops to enhance their teaching skills, and present workshops to other teachers. The District's emphasis is on a well-balanced and rigorous core curriculum at all grade levels. Instructional programs are aligned with state and District standards.

A comprehensive school plan approved by the School Improvement Committee guides the school. Every four years a Program Quality Review and State Compliance review are conducted which complement the District's in-house instructional evaluations.

Students who are non and limited English speaking are provided with additional instructional aide services for tutorial purposes.

Special Education students are provided with specially trained staff to meet their diagnosed learning needs according to an established individual education plan.

Valle Lindo School District also utilizes the Skills Lab, an intervention program designed to meet the needs of students who need extra attention on an individual basis. This is a pull-out program and the amount of time spent varies according to the student's individual needs. Approximately 75 students take advantage of the program.



Expenditures & Services Funded

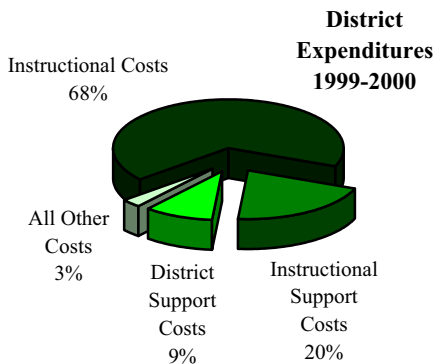
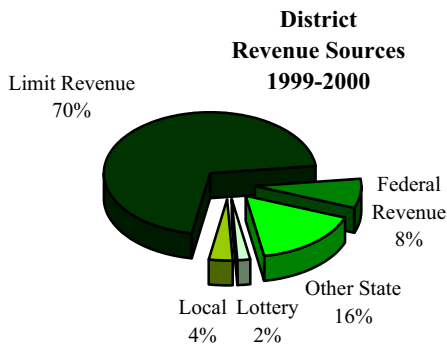
For the 1999-00 school year, Valle Lindo School District spent an average of \$4,813 to educate each student (based on 1999-00 audited financial statements). The figures shown in the table below reflect the direct cost of educational services, per ADA, excluding food services, facilities acquisition and construction, and certain other expenditures. This calculation is required by law annually and compared with other districts statewide.

Current Expense of Education Per Student* 1999-00		
Statewide Average		
Valle Lindo School District	All Elementary Districts	All Districts
\$4,813	\$5,460	\$5,705

**Ed-Data and California Department of Education, School Fiscal Services Division - J-200 Reports.*

In addition to general fund state funding, Valle Lindo School District receives state and federal categorical funding for special programs. For the 1999-00 school year, the District received approximately \$1,641,360 (\$1,301 per student) in federal and state aid for the following categorical, special education, and support programs:

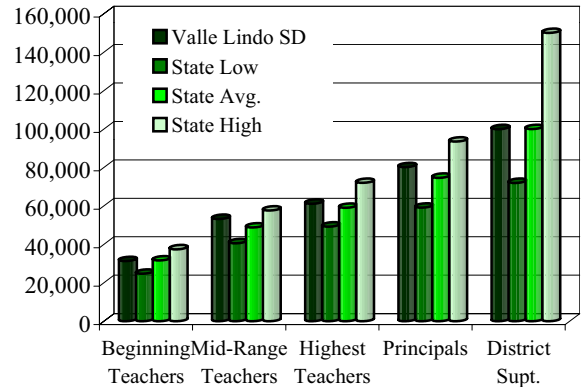
- Title I
- Special Education Grants
- Eisenhower Math
- Gifted and Talented Pupils
- School Improvement Program
- Economic Impact Aid
- Instructional Materials
- Title VII



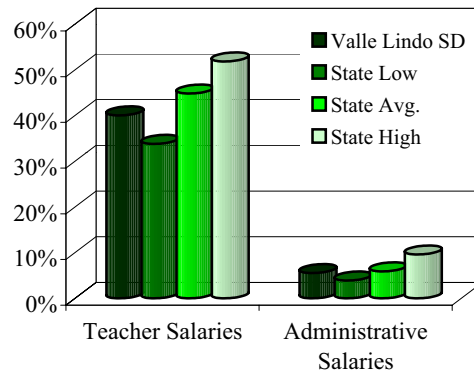
Salary & Budget Comparison

State law requires comparative salary and budget information to be reported to the general public. For comparison purposes, the State Department of Education has provided average salary data from school districts having between 1,000 and 4,999 average daily attendance throughout the state.

**1999-2000 Average Salary Information
Teachers - Principals - Superintendent**



**1999-2000 Average Salary Information
Teachers & Administrative Salary Percentages**



Contact Information

Parents who wish to participate in Dean L. Shively Middle School's leadership teams, school committees, school activities, or become a volunteer may contact Albert E. Crespo, principal at (626) 580-0610 x110.

Mission Statement

It is the mission of the Valle Lindo School District that all students realize their maximum potential, empowering them to become challenged intellectually, socially responsible, and culturally sensitive.

District Goals

Provide an educationally sound system delivered to meet the needs of all students.

Provide personnel services to support the integrity of the educational process.

Provide a safe, clean and secure environment for all students and staff.

Ensure a fiscally responsible and balanced budget.

Provide effective communication to the Board of Trustees, parents, students, employees, and community.



2001-2002 Board of Trustees

Rudy Martinez
President

David Del Rio
Vice President

Ruth E. Gonzales
Clerk

Richard Angel
Member

Gloria Olmos
Member

Administration

Mary Louise Labrucherie
District Superintendent & Secretary to Board

Marianna Etcheverria
Business Manager

Mary Mc Conahay
Director of Pupil Personnel

Albert Crespo, Principal
Assistant Superintendent of
Instruction & Human Resources

John Gannon
Assistant Principal